



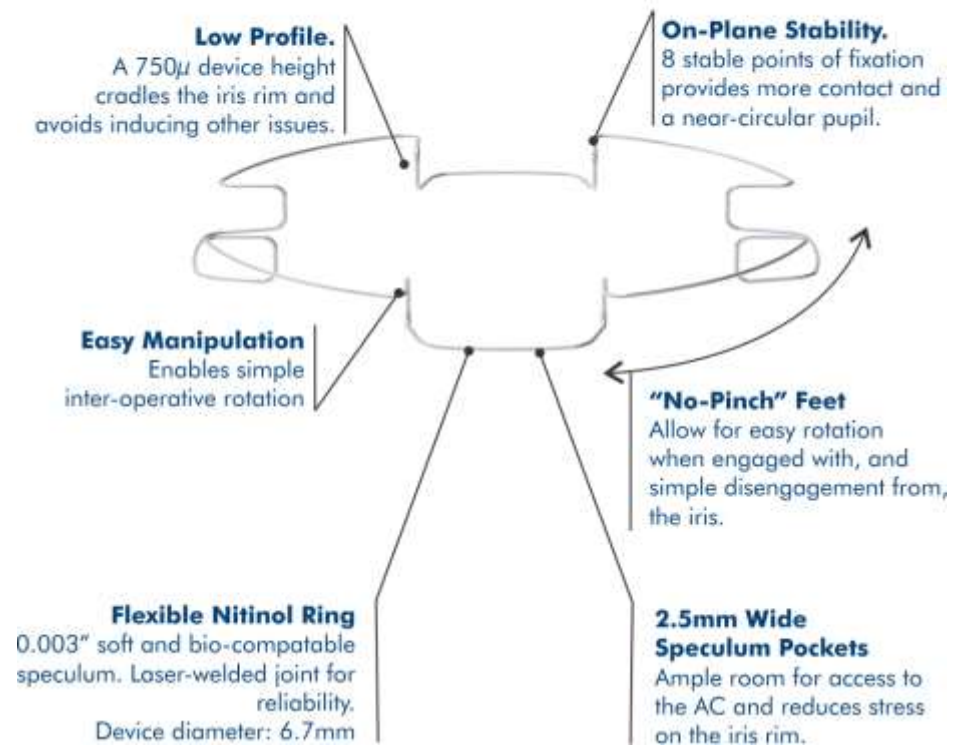
Surgical Pearls

X1 Iris Speculum

X1 Components and Dimensions



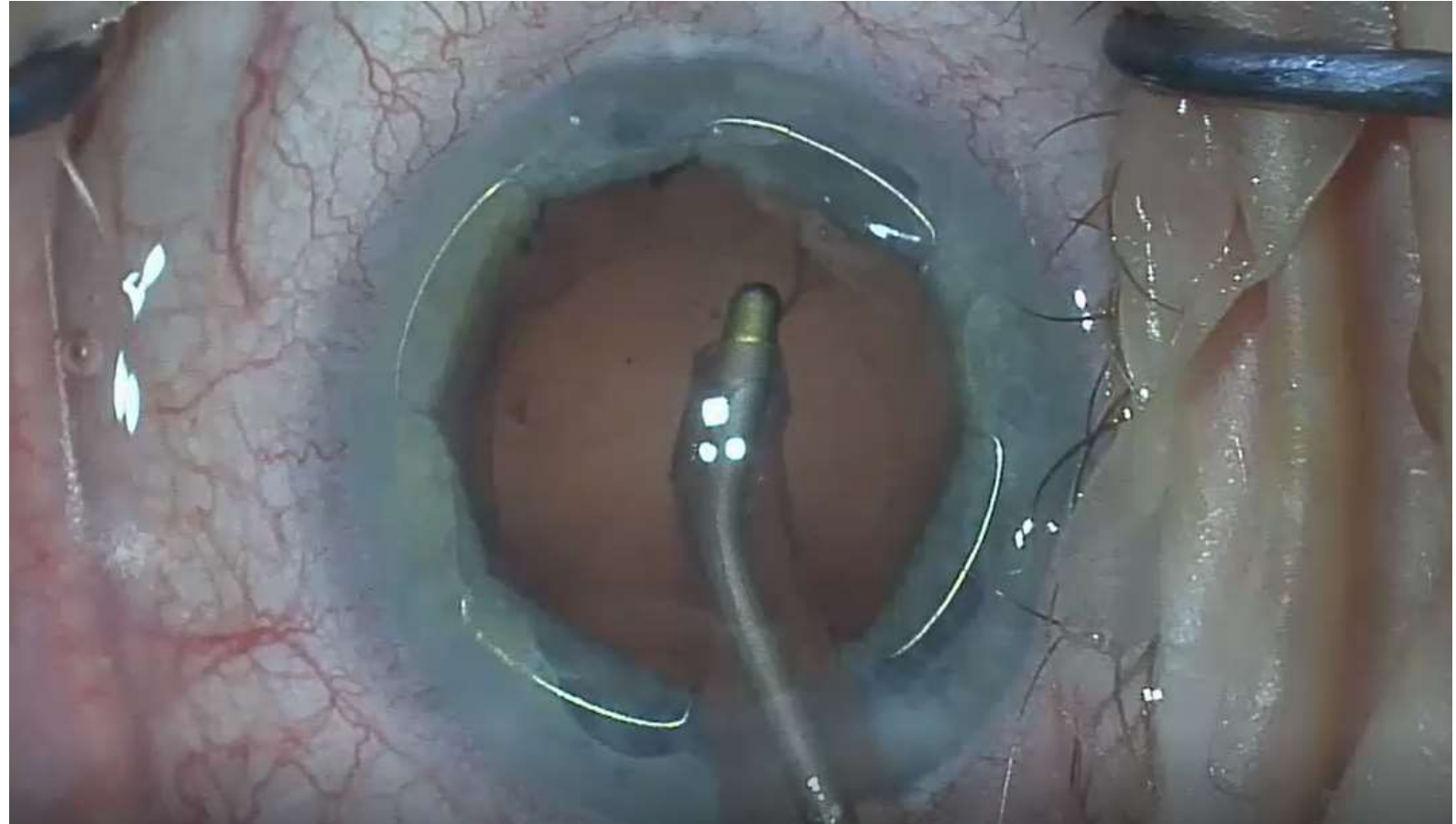
X1 Ready-Loaded Iris Speculum Injector



XpandNT Iris Speculum

Preferred Orientation of XpandNT

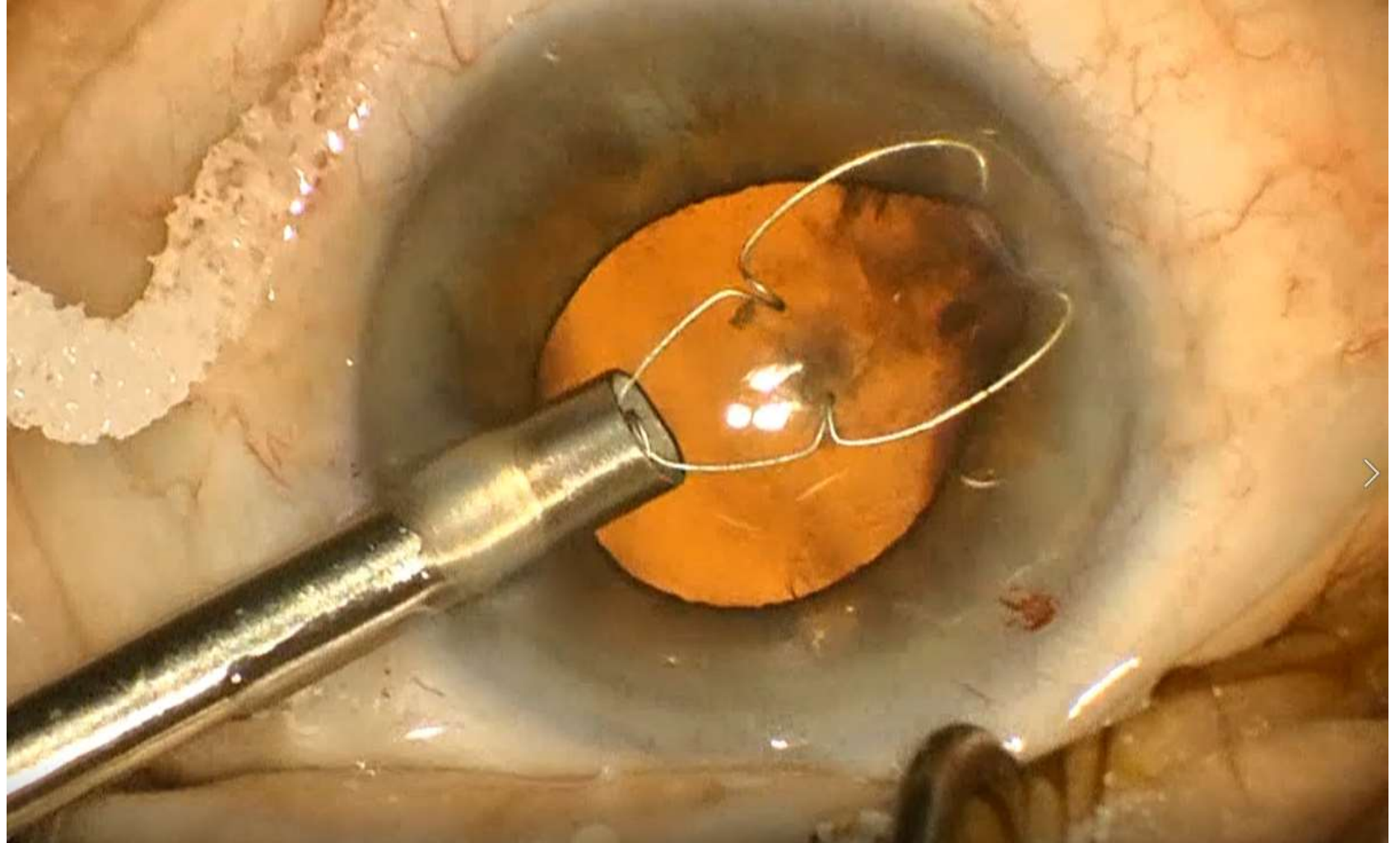
Distal foot aligned
with the primary
incision



X1 Iris Speculum Injection

After the introduction of OVD, inject the Xpand and engage the distal iris by allowing the foot of the device to slide under the iris rim.

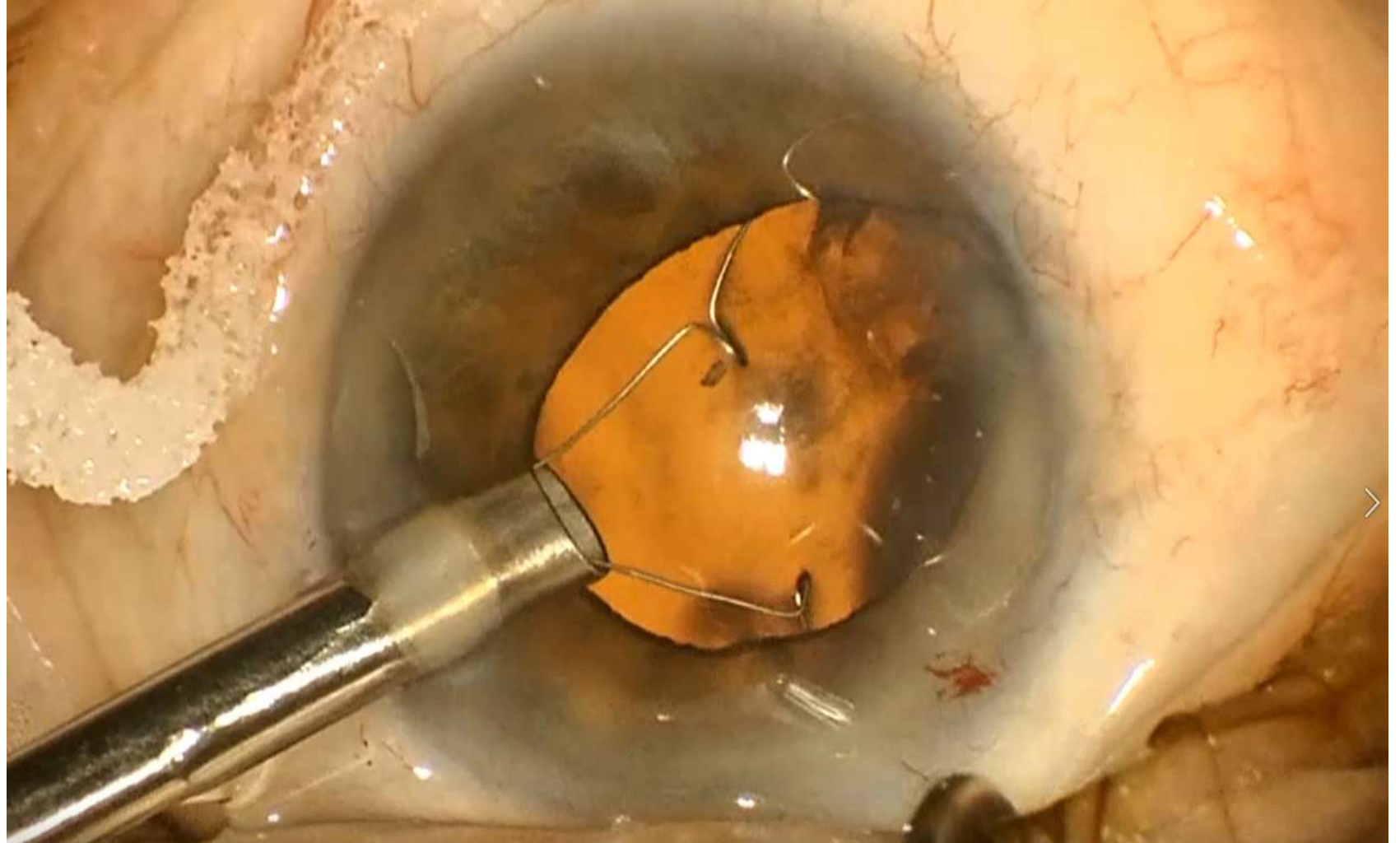
Note cannula tip position



X1 Iris Speculum Injection

Allow two lateral feet to engage iris.

Technique often employed by surgeons is to slightly pronate the wrist.



X1 Iris Speculum Injection

Push the injector button fully forward to allow the ring to disengage.

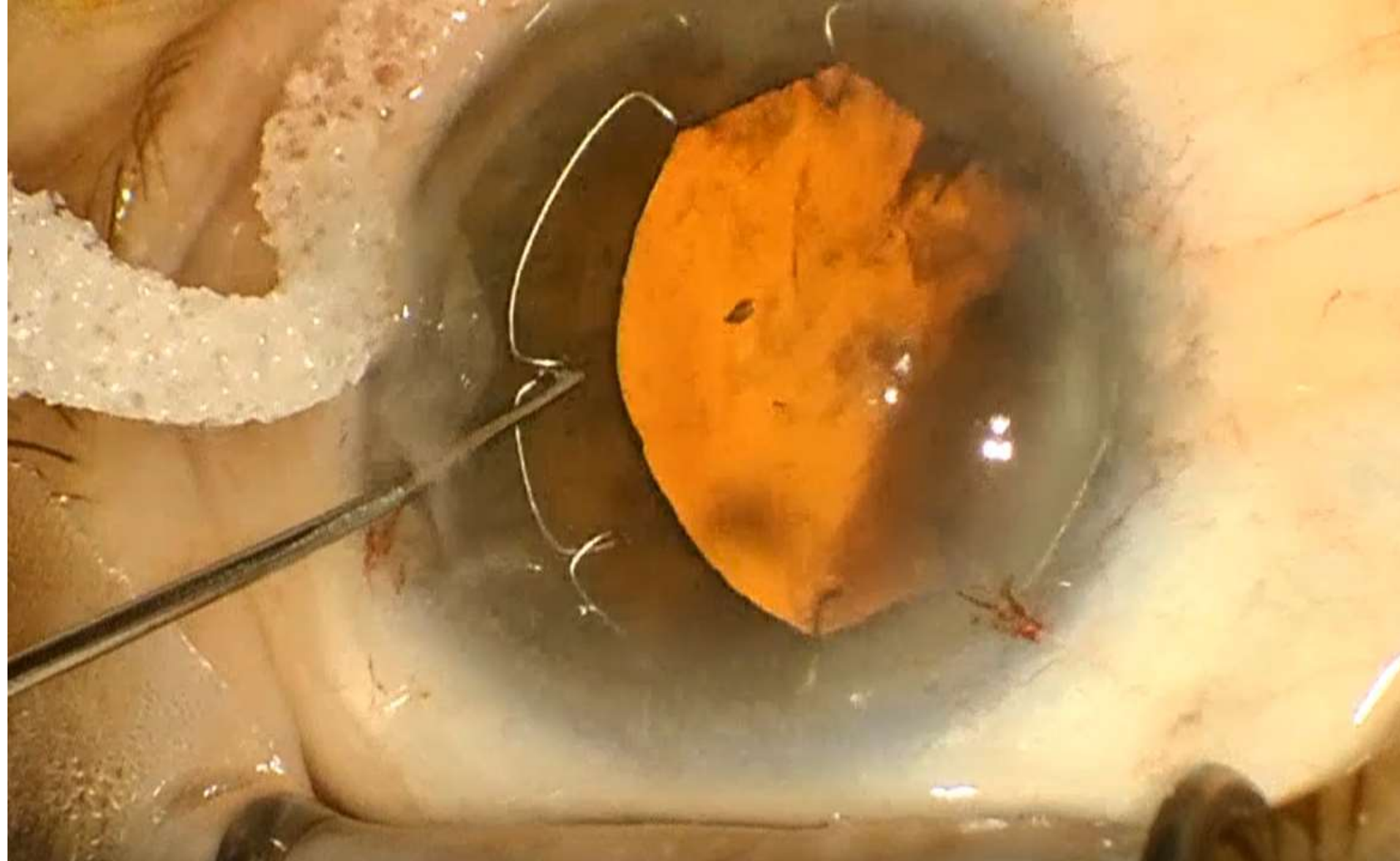
Ring will rest on the iris rim.



X1 Iris Speculum Injection

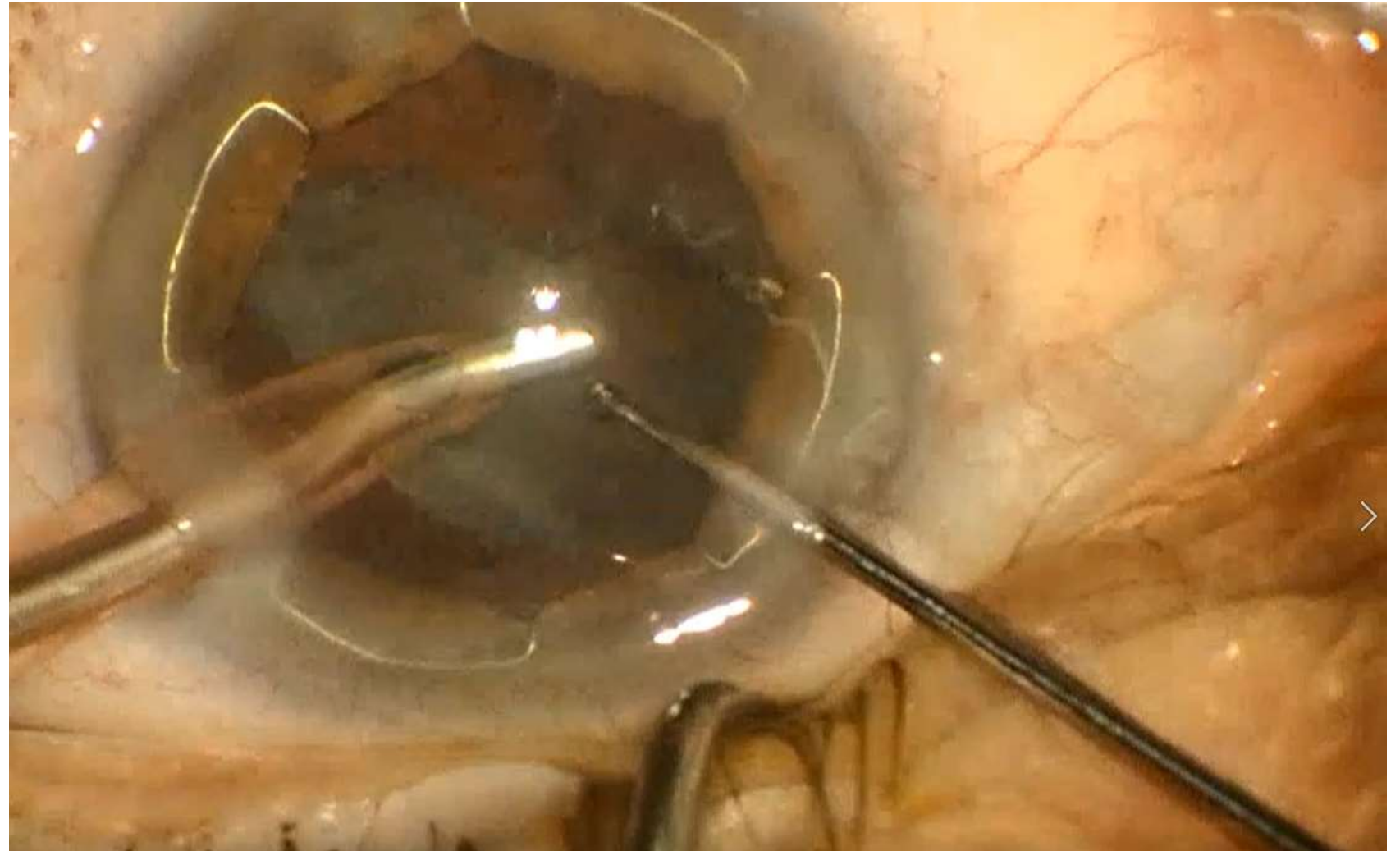
Using a Williamson Manipulator or similar push-pull, engage the XpandNT as shown in the image to the right.

Tuck proximal foot under iris rim.



X1 Iris Speculum Interoperative

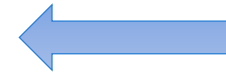
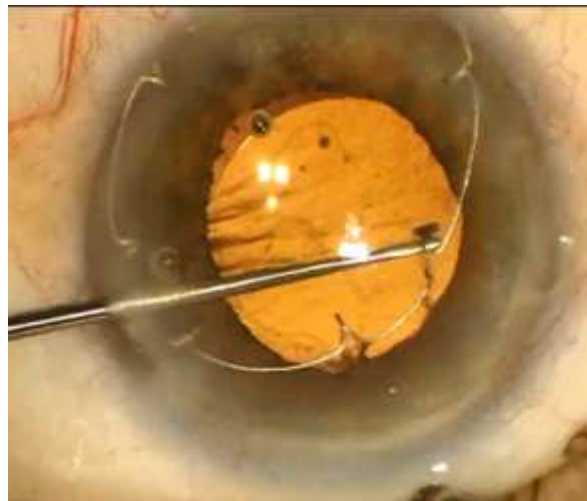
Position device as desired.



X1 Iris Speculum Removal

After lens injection
but BEFORE
evacuating OVD
disengage all four
XpandNT feet.

Allow device to rest
on iris rim.
note manipulator position



X1 Iris Speculum Removal

Pull device through the primary incision using a Williamson manipulator or similar push-pull.

Good technique is to pull down along the contour of the globe.



X1 Iris Speculum Talking Points

First fully pre-loaded pupil expansion system

Made possible by Nitinol material

- Memory Metal will always remember its exact shape
- Long history in medical devices, very biocompatible

Fully loaded in the injector during the manufacturing process

The ultimate in convenience and consistency

Sterile / Single-Use / Disposable System

2.4mm Incision (can go through a “tight” 2.2mm)

Sold in boxes of four individually packed, sterile units

What experienced X1 users know

- 2.4mm Incision is ideal. It can be tight through a 2.2mm incision
- The surgeon should advance the Xpand slowly from the injector, especially for their first few cases. As a reference, it comes out faster than the Malyugin ring
- Place the injector tip as close as possible to the distal iris rim. Engage the Distal Iris Rim first, then advance the rest of the Xpand speculum.
- Pronate the wrist slightly to engage the lateral feet.
- In rare instances, the lateral feet may appear twisted. They are likely not twisted, but overlapped. To resolve, draw the device back into the injector while still in the eye, then re-engage the distal iris rim. This should allow the feet to disengage from each other.
- If the speculum is not exactly in line with the primary incision, it is simple to engage one of the feet and rotate the device to the desired orientation.
- To remove, simply disengage the proximate and two lateral feet from the iris rim and remove from the primary incision using a hook for push/pull manipulator.
- Keep OVD in the AC until after the device is removed.



- Free samples available
 - Info.Diamatrix.com
 - Ask your Diamatrix Sales Rep
- Contact Diamatrix
 - (800) 867-8081
 - cs@Diamatrix.com

Product Details



READY-LOADED IRIS SPECULUM

Item#: 346722
Description: XpandNT X1 Ready-Loaded Iris Speculum, 6.7mm, Single-Use, Box of 4
Offered at \$500/box
Manufacturer: Diamatrix Ltd.
Country of Origin: United States