



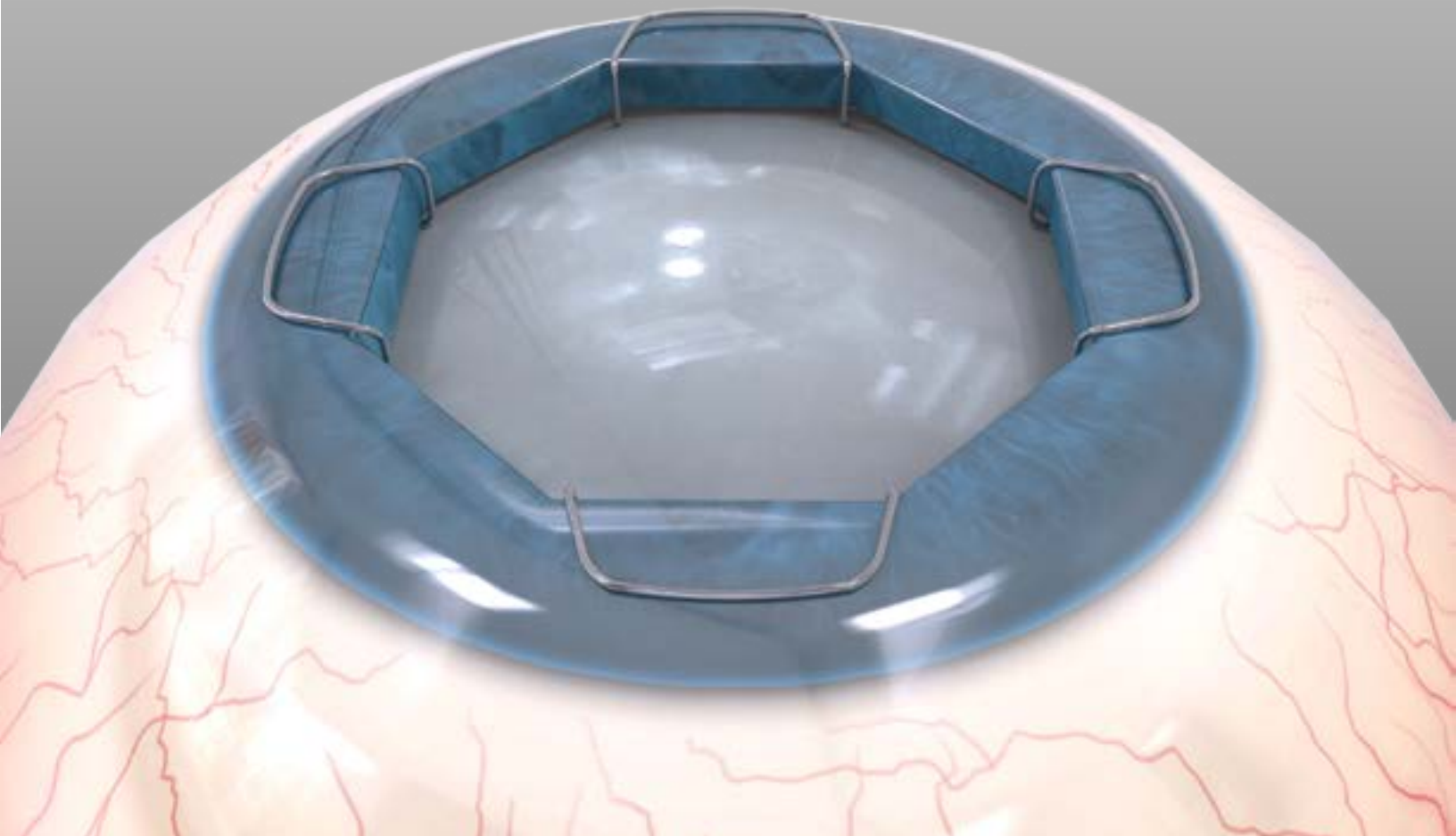
4 THINGS TO KNOW ABOUT THE X1



a users guide



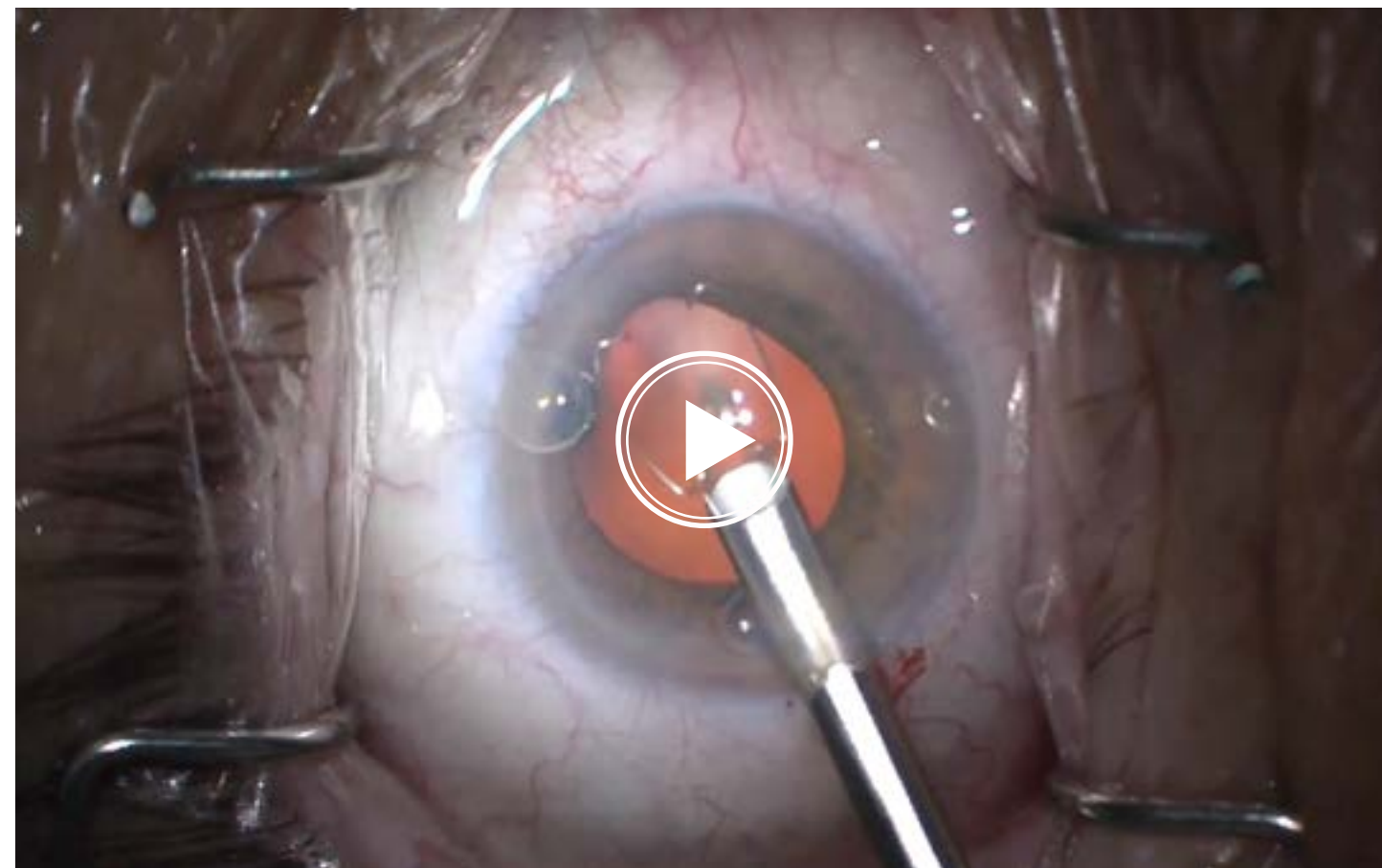
The X1 Ready-Loaded Iris Speculum is an amazing tool. Our newest device is uniquely designed to be elegant, non-pinching, and exceptionally stable. We offer these tips to shorten your learning curve and allow you to get back to what you do best, helping patients.



— TIP #1 —

HOW TO APPROACH

ENGAGING TO THE DISTAL IRIS



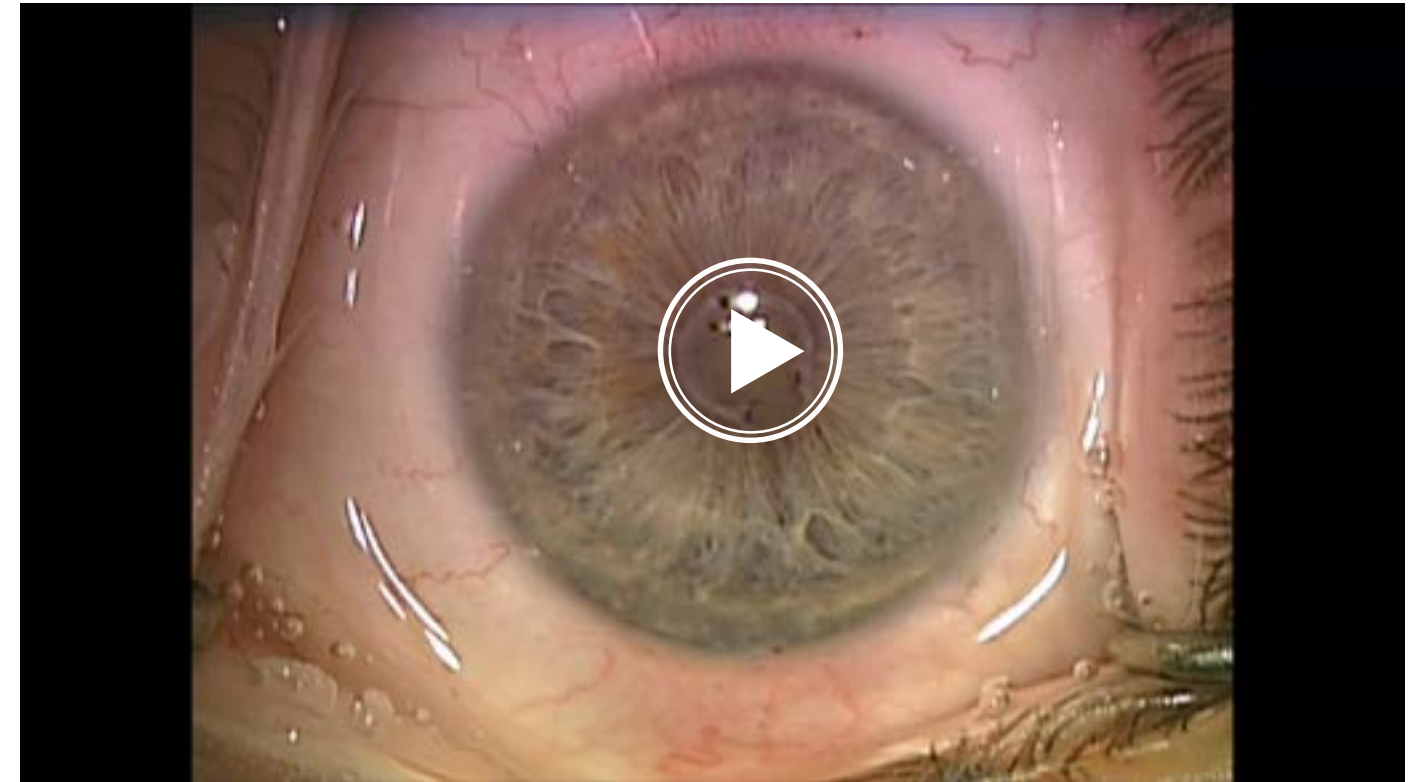
This X1's Nitinol frame delivers greater flexibility.

To ensure proper control of the device, engage the distal iris with the foot of the X1 as it emerges from the injector lumen. This will provide a stable pivot point for you to engage the lateral feet.

— TIP #2 —

HOW TO APPROACH

SPEED OF INJECTION



The X1 Ready-loaded Iris Speculum and its injector perform differently than other devices on the market.

Best practice suggests slowly advancing the injector until you are comfortable with how the device behaves in the eye.

— TIP #3 —

HOW TO APPROACH

REMOVING THE DEVICE



**Williamson Hook
Method**



**Lens Hook
Method**

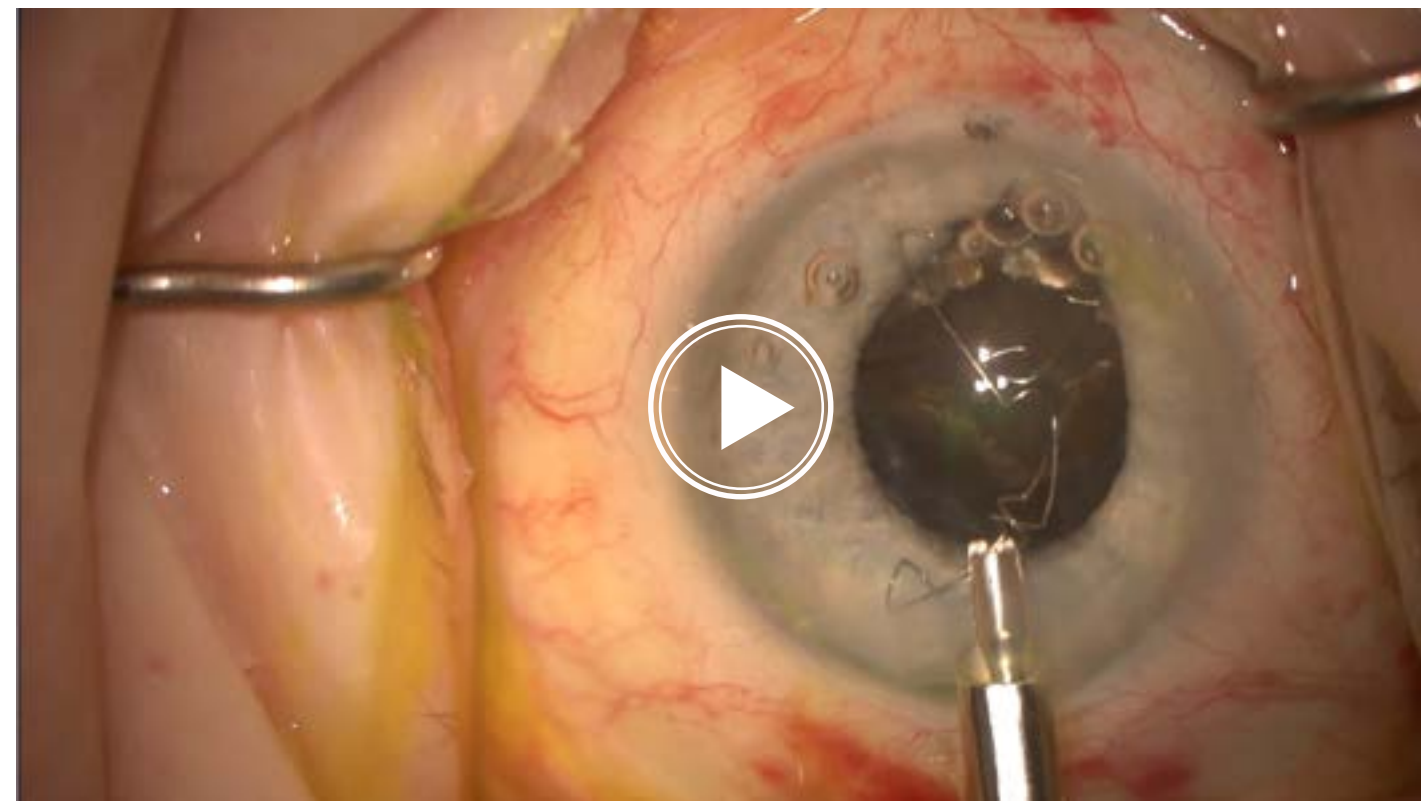
The injector is not needed for the removal of the X1 due to the device being thin, flexible, and non-pinching.

We recommend following our [DFU](#) for removing the X1. However, we do recognize some surgeons prefer to remove the device using Dr. Bregman's 2-step method.

— TIP #4 —

HOW TO APPROACH

CROSSED FEET



You **MUST** observe the device as it exits the injector cannula. The X1 is precisely engineered as a near-circular device. On rare occasions, the two opposing lateral feet may latch onto each other. If fully injected into the eye with latched feet, the device will appear to be twisted.

The primary course of action is to retract the device back into the injector to reset the feet into the proper parallel position. Do not disengage the device from the injector unless you are comfortable with the X1's placement.